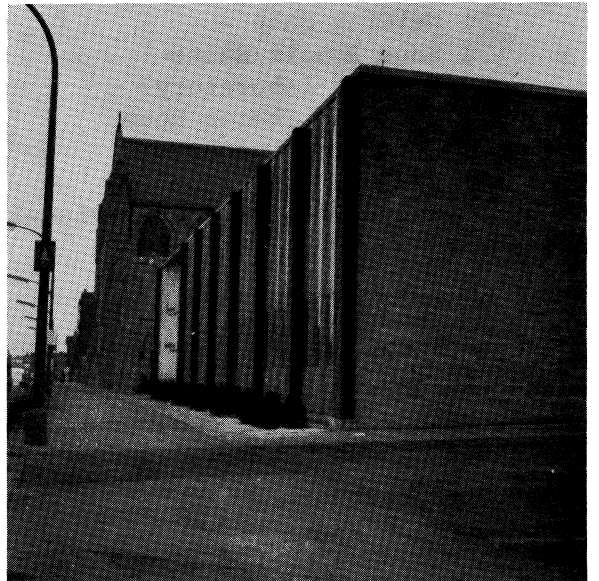
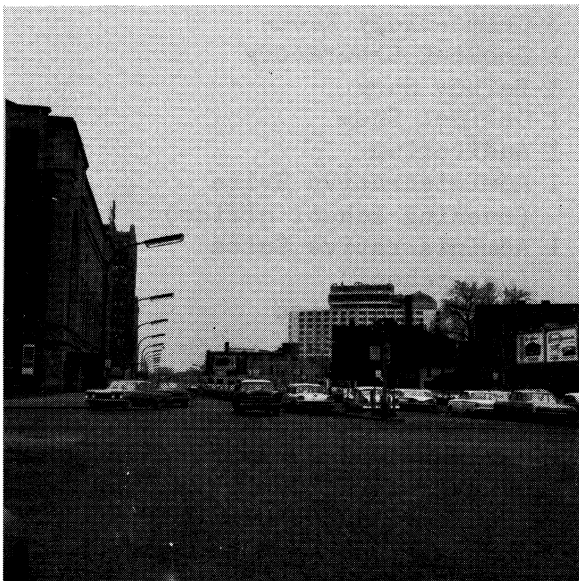


VOCATIONAL SENIOR HIGH SCHOOL



VOCATIONAL SENIOR HIGH SCHOOL

The Vocational Senior High School, a four-story masonry and wood structure was erected in 1932, and additions were constructed in 1940 and 1956. It has a basement. The building is located on a 2.46 acre site at 1101 Third Avenue South. The school has no athletic field, playground, or parking area. Bryn Mawr Meadows, a 39.03 Park Board facility, is used as a practice field. The Parade, another Park Board facility, is used for Vocational Senior High School's football games.

In general, any student who has completed the ninth grade or higher may be considered for entrance to Minneapolis Vocational Senior High School. Individuals under the age of 21 who are graduates of a Minnesota High School may attend tuition free. Students 21 years old or older may enroll on a tuition basis. Over 6,000 adults are enrolled in evening school classes. In general, adults attend classes one or two evenings per week. Heavily traveled traffic arteries surround the school. For additional information concerning traffic arteries and land use near the Vocational Senior High School refer to the following elementary school district descriptions: Washington, Madison and Emerson.

As may be noted on plates 124, 125 and 126 the building contains the following basic spaces:

Ground Floor

- 1 Offset Printing Suite
- 1 Cooking Laboratory
- 1 Aviation Engines Shop
- 1 Aviation Air Frames Shop
- 1 Automobile Mechanics Shop
- 1 Welding Shop
- 1 Shoe Repair Suite
- 1 Kitchen Laboratory
- 1 Band and Chorus Room
- 1 Teachers' Lunchroom
- 1 Student Lunchroom
- 1 Radio Theatre (audio-visual room)

First Floor

- 1 Classroom (small)
- 1 Auto Mechanics Suite
- 2 Printing Shops
- 1 Retail Store
- 1 Tea Room and Kitchen
- 3 Cosmetology Rooms
- 1 Cooking Laboratory
- 1 Barber Shop
- 1 Cabinet Shop
- 1 Auditorium
- 1 Administrative Suite
(evening school office)
- 1 Administrative Suite
(day school)
- 1 Counseling Suite

(basic spaces continued on next page)

Second Floor

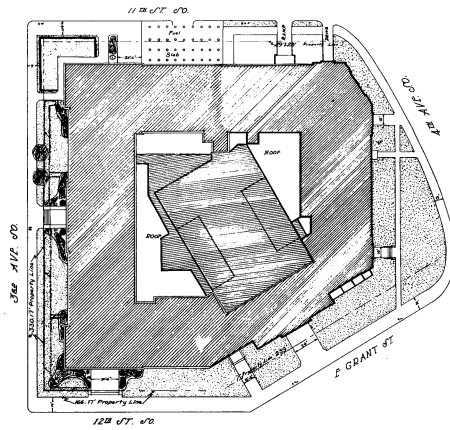
- 2 Classrooms (regular)
- 2 Classrooms (small)
- 1 Demonstration Room
- 3 Machine Shops
- 1 Sheet Metal Shop
- 1 Upholstering Shop
- 5 Commercial Art Rooms
- 1 Display (art) Classroom
- 1 Needle Arts Suite
- 2 Pre-Nursing Rooms
- 1 Textiles Room
- 2 Dressmaking Rooms
- 3 Science Rooms
- 1 Electronics Laboratory
- 2 Advanced Tailoring Rooms
- 1 Teachers' Lounge
- 1 Data Processing Room

Third Floor

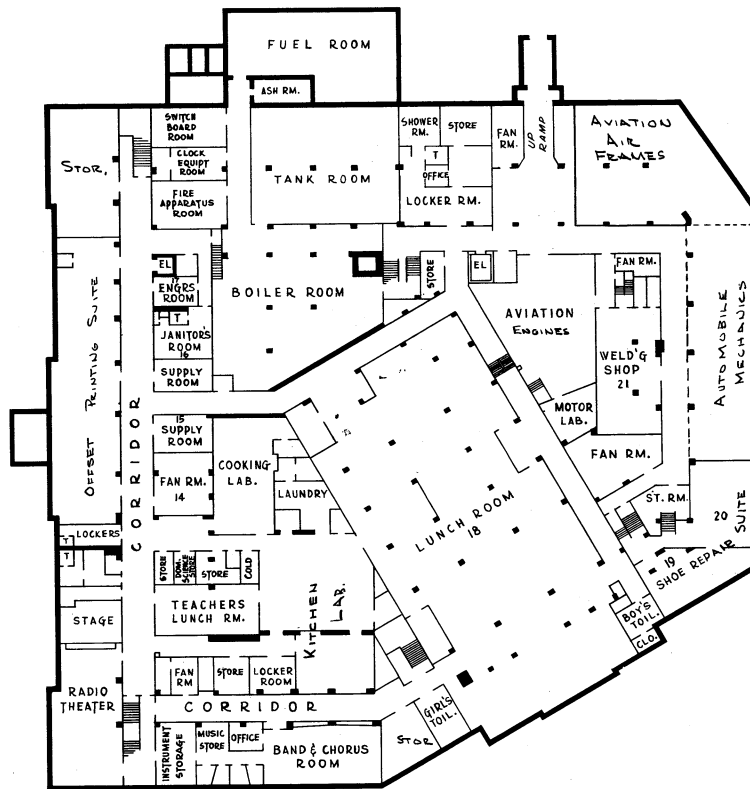
- 4 Classrooms (regular)
- 6 Classrooms (small)
- 1 Special Education Room
- 1 Commercial Art Room
- 2 Typing Rooms
- 1 Commercial Room
- 1 Office Training Room
- 1 Business Machines Room
- 1 Bookkeeping Room
- 1 Remedial Reading Center
- 2 Drafting Rooms
- 1 Pattern Making Shop
- 1 Cabinet Making Shop
- 1 Radio and Television Suite
- 1 Instructional Materials Center (library)
- 1 Boys' Locker Room
- 1 Girls' Locker Room
- 1 Teachers' Lounge
- 1 Foundry
- 1 Photographic Arts Suite

Fourth Floor

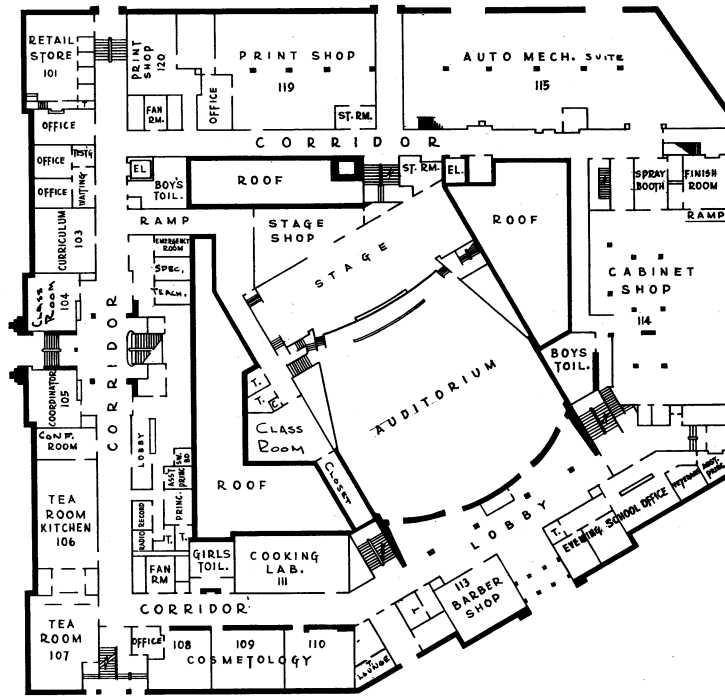
- 4 Classrooms (regular)
- 8 Classrooms (small)
- 1 Special Education Room
- 1 Boys' Gymnasium
- 1 Girls' Gymnasium
- 3 Typing Rooms
- 1 Comptometer Room
- 1 Music Room
- 3 Drafting Rooms
- 1 Radio Laboratory
- 1 Electronic Technicians Suite
- 1 Electrical Appliance Shop
- 1 Electrical Wiring Shop
- 1 Electrical Motor Shop



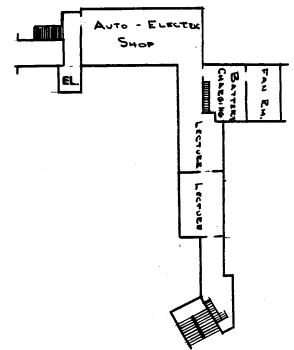
PLOT PLAN



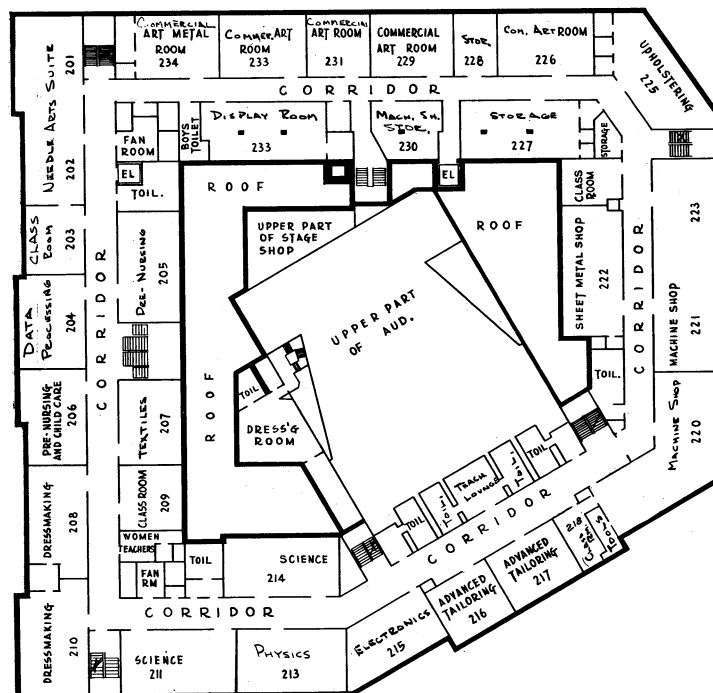
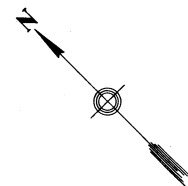
BASEMENT PLAN



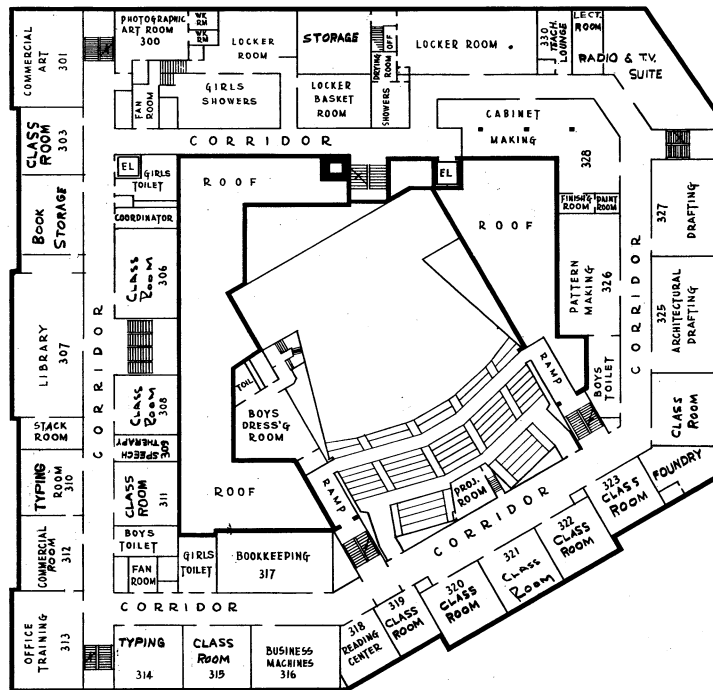
FIRST FLOOR PLAN



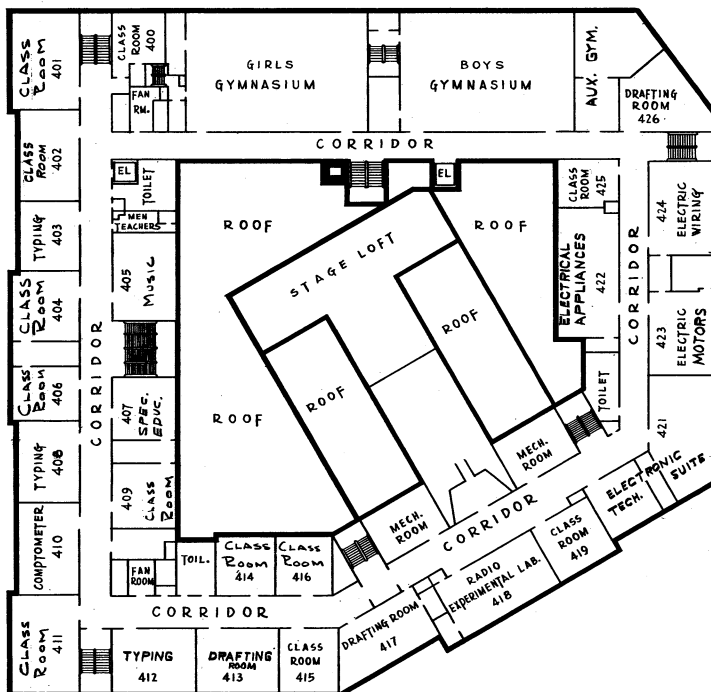
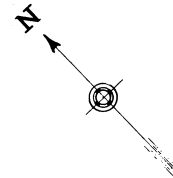
MEZZANINE



SECOND FLOOR



THIRD FLOOR



FOURTH FLOOR

*DAYTIME CAPACITY OF THE VOCATIONAL SENIOR HIGH SCHOOL

The Vocational Senior High School has an optimum capacity of 1,595 pupils and a rated capacity of 1,993 pupils. The gross capacity of each teaching space in this school is listed in Table 26. To insure desirable and needed flexibility in vocational and technical programming, the gross capacities of the Vocational Senior High School have been multiplied by 80 per cent to obtain the optimum and rated capacity figures.

UTILIZATION OF THE VOCATIONAL SENIOR HIGH SCHOOL

At the end of the fourth week of school this building had the following grade distribution:

| Grade | Number |
|-------------------|------------|
| 10 | 505 |
| 11 | 387 |
| 12 | 303 |
| Sub Total | 1195 |
| Special Classes | 47 |
| Adult Day Program | <u>437</u> |
| Total | 1,679 |

The total enrollment of 1,679 at Vocational Senior High School is 314 less than the building's rated capacity and this enrollment is 84 more than its optimum capacity.

*NOTE: The term daytime capacity refers to the program offered during the regular school day.

TABLE 26

COMPUTATION OF DAYTIME CAPACITY
VOCATIONAL SENIOR HIGH SCHOOL

| <u>Spaces</u> | <u>Optimum</u> | <u>Rated</u> | <u>Total Capacity</u> | |
|--------------------------------|----------------|--------------|-----------------------|--------------|
| | | | <u>Optimum</u> | <u>Rated</u> |
| 11 Classrooms (regular) | 25 | 30 | 275 | 330 |
| 17 Classrooms (small) | 20 | 25 | 340 | 425 |
| 2 Special Education Rooms | 10 | 15 | 20 | 30 |
| 3 Science Rooms | 24 | 30 | 72 | 90 |
| 1 Boys' Gymnasium | 35 | 45 | 35 | 45 |
| 1 Girls' Gymnasium | 35 | 45 | 35 | 45 |
| 1 Band and Chorus Room | 35 | 45 | 35 | 45 |
| 1 Music Room | 30 | 40 | 30 | 40 |
| 1 Remedial Reading Center | 10 | 15 | 10 | 15 |
| 4 Commercial Art Rooms | 18 | 22 | 72 | 88 |
| 2 Commercial Art Rooms | 15 | 18 | 30 | 36 |
| 1 Photographic Arts Room | 15 | 18 | 15 | 18 |
| 1 Display (art) Room | 12 | 16 | 12 | 16 |
| 5 Typing Rooms | 24 | 30 | 120 | 150 |
| 1 Office Training Room | 18 | 24 | 18 | 24 |
| 1 Business Machine Room | 18 | 22 | 18 | 22 |
| 1 Comptometer Room | 24 | 30 | 24 | 30 |
| 1 Bookkeeping Room | 24 | 30 | 24 | 30 |
| 1 Data Processing Room | 18 | 24 | 18 | 24 |
| 1 Retail Store | 6 | 12 | 6 | 12 |
| 2 Cooking Laboratories | 15 | 20 | 30 | 40 |
| 1 Tea Room and Kitchen Suite | 15 | 20 | 15 | 20 |
| 1 Kitchen Laboratory | 15 | 18 | 15 | 18 |
| 2 Dressmaking Rooms | 15 | 20 | 30 | 40 |
| 1 Textiles Room | 16 | 20 | 16 | 20 |
| 1 Needle Arts Suite | 20 | 24 | 20 | 24 |
| 2 Advanced Tailoring Rooms | 15 | 18 | 30 | 36 |
| 5 Drafting Rooms | 22 | 28 | 110 | 140 |
| 3 Machine Shops | 16 | 20 | 48 | 60 |
| 1 Sheet Metal Shop | 16 | 20 | 16 | 20 |
| 1 Welding Shop | 16 | 20 | 16 | 20 |
| 2 Cabinet Making Shops | 18 | 24 | 36 | 48 |
| 1 Pattern Making Shop | 15 | 18 | 15 | 18 |
| 1 Automobile Mechanics Suite | 30 | 36 | 30 | 36 |
| 1 Automobile Mechanics Shop | 18 | 22 | 18 | 22 |
| 2 Printing Shops | 16 | 18 | 32 | 36 |
| 1 Offset Printing Suite | 36 | 40 | 36 | 40 |
| 1 Electrical Appliance Shop | 16 | 22 | 16 | 22 |
| 1 Electrical Motors Shop | 16 | 20 | 16 | 20 |
| 1 Electrical Wiring Shop | 16 | 20 | 16 | 20 |
| 1 Radio Laboratory | 18 | 22 | 18 | 22 |
| 1 Radio and Television Suite | 16 | 20 | 16 | 20 |
| 1 Electronic Technicians Suite | 16 | 20 | 16 | 20 |
| 1 Electronics Laboratory | 18 | 22 | 18 | 22 |
| 1 Aviation Engines Shop | 15 | 18 | 15 | 18 |
| 1 Aviation Air Frames Shop | 15 | 18 | 15 | 18 |
| 1 Upholstering Shop | 13 | 16 | 13 | 16 |
| 1 Shoe Repair Shop | 16 | 24 | 16 | 24 |
| 1 Barber Shop | 12 | 12 | 12 | 12 |
| 3 Cosmetology Rooms | 15 | 18 | 45 | 54 |
| 2 Pre-Nursing Rooms | 20 | 25 | 40 | 50 |
| Total Gross Capacity | | | 1994 | 2491 |
| 80% | | | 1595 | 1993 |

SCHOOL BUILDING FACT SHEET

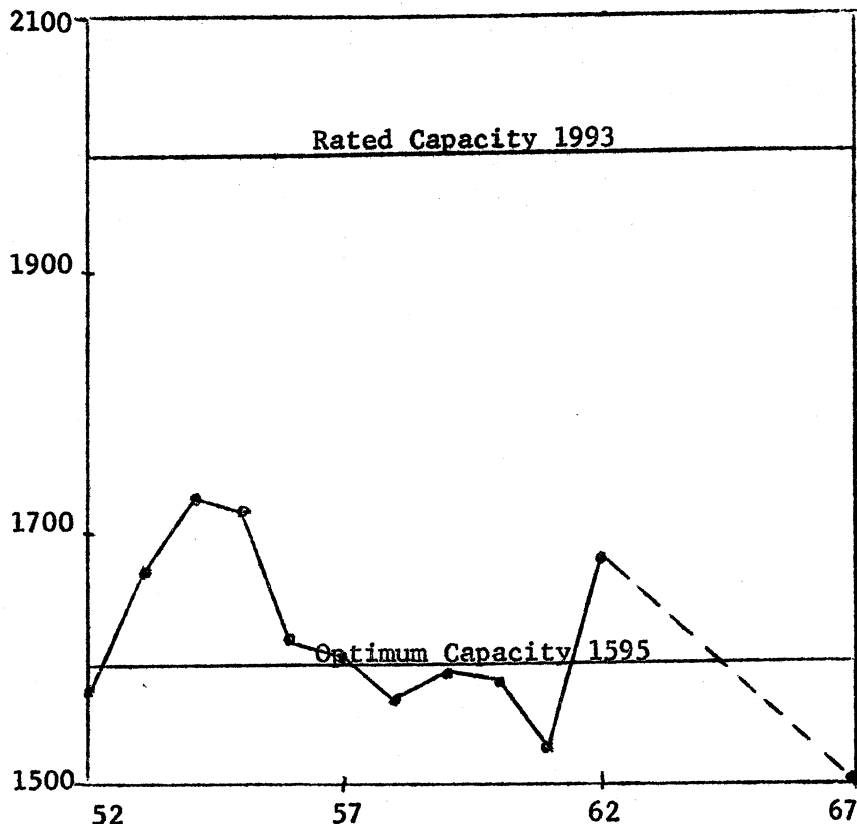
Donald J. Leu & John J. McNicholas, Jr.
Educational Facilities Study
Michigan State University

SCHOOL Vocational Senior High ADDRESS 1101 Third Avenue South
GRADES 10-12 BUILT 1932 ADDITIONS 1940, 1956
STRUCTURE Masonry and wood STORIES 4 & B
SITE AREA 2.46 acres ATHLETIC FIELD none
NUMBER OF CLASSROOMS 28 OTHER SPACES: Usual Secondary
NUMBER OF KINDERGARTENS 0 Educational Facilities
NUMBER OF SPECIAL EDUCATION ROOMS 2
RATED CAPACITY ¹ 1993 SEPTEMBER, 1962 ENROLLMENT 1679

ENROLLMENT

ENROLLMENT TREND

| Year | Sept. |
|-------------------|-------|
| 1952 | 1567 |
| 1953 | 1675 |
| 1954 | 1723 |
| 1955 | 1713 |
| 1956 | 1615 |
| 1957 | 1599 |
| 1958 | 1569 |
| 1959 | 1593 |
| 1960 | 1582 |
| 1961 | 1531 |
| 1962 | 1679 |
| 1967 ² | 1800 |



¹ Formula: 30 per classroom, 50 per kindergarten, 15 per special education room
² Estimate based upon data obtained from the Minneapolis Public Schools' Office of Research, Census and Attendance

NEEDED IMPROVEMENTS

1. Acoustical treatment
2. Interior painting
3. Parking
4. Modernization and/or rehabilitation
 - Administrative Suite, including counseling suite
 - Added equipment and furnishings for vocational-technical areas.
 - Storage, including receiving room and classroom storage
 - Heating, including automatic firing, ventilation, and temperature control.
 - Additional Student Lockers
 - One Science room
 - Instructional Materials Center (library) including additional floor area and furnishings
 - Home Economics laboratories
 - Lounges
 - Locker and shower rooms
 - Radio room (audio-visual aids room)
 - Communications room
 - Relocate aviation engines and aviation air frames to local airport. Convert aviation spaces to other educational use.

SUMMARY

Vocational Senior High School, a good building, was erected in 1932, and additions were constructed in 1940 and 1956. Assuming that a community college will be provided in another location, and that this school continues to function as a vocational-technical high school in the future, this building needs extensive modernization and rehabilitation in order to meet present day program requirements.

The location, space, equipment, furnishings, and storage in some of the vocational-technical areas are inadequate or obsolete. In addition to the rehabilitation needed, painting and acoustical treatment would enhance the building's beauty and function.

The limited site, 2.46 acres, provides space only for the building, sidewalks and small grass areas. Parking is needed, particularly for staff.